



Orion Solar Racking Saturn Series Carport Mount System is a revolutionary system for PV modules on the ground.

Orion Solar Racking has brought over 3 years of field experience and special engineering to form our unique, patented aluminium base rail and Quickstone technology to enable easier and faster installations.

BENEFITS:

- No roof penetrations and potential maintenance issue
- Provide shade & protect from harmful sun/elements
- Demonstrate "Green" Awareness & Increase customer/ employee loyalty
- Add car charging unit(s) and increase value for patrons w/ "Plug-in Hybrids"
- Maximize wasted space by generating clean/renewable energy
- Earn coveted LEED points.

FEATURES:

- No roof penetrations and potential maintenance issue
- Significantly Reduce Complicated Engineering w/ Template & Modular Design
- Product can scale from residential to large commercial applications w/ ease
- Greatly reduce installation time & labor costs w/ pre-assembled components
- Easy minimal assembly w/ no dangerous welding required
- Minimal man hours mean do more w/ less time & money

Lighting

Customization available to satisfy client preferences and IES light level requirements by our partner DECO Lighting. www.getdecco.com

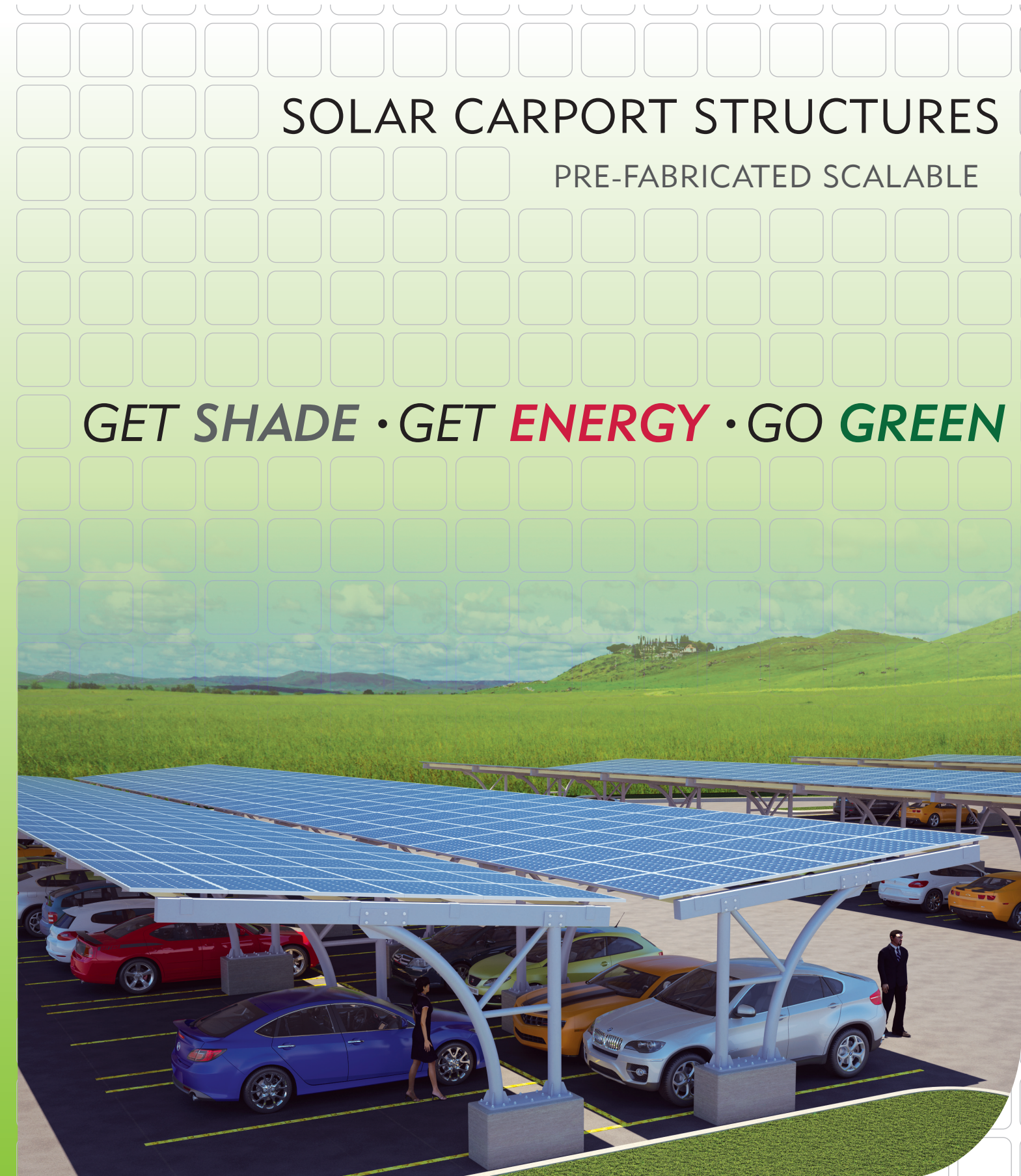
Integrated light options include energy efficient LED and induction fixtures.

Branding and Advertising

Creates additional revenue opportunities

Charging Station

Integrates with commercially available OEM electric vehicle charging systems.



SOLAR CARPORT STRUCTURES

PRE-FABRICATED SCALABLE

GET SHADE • GET **ENERGY** • GO **GREEN**

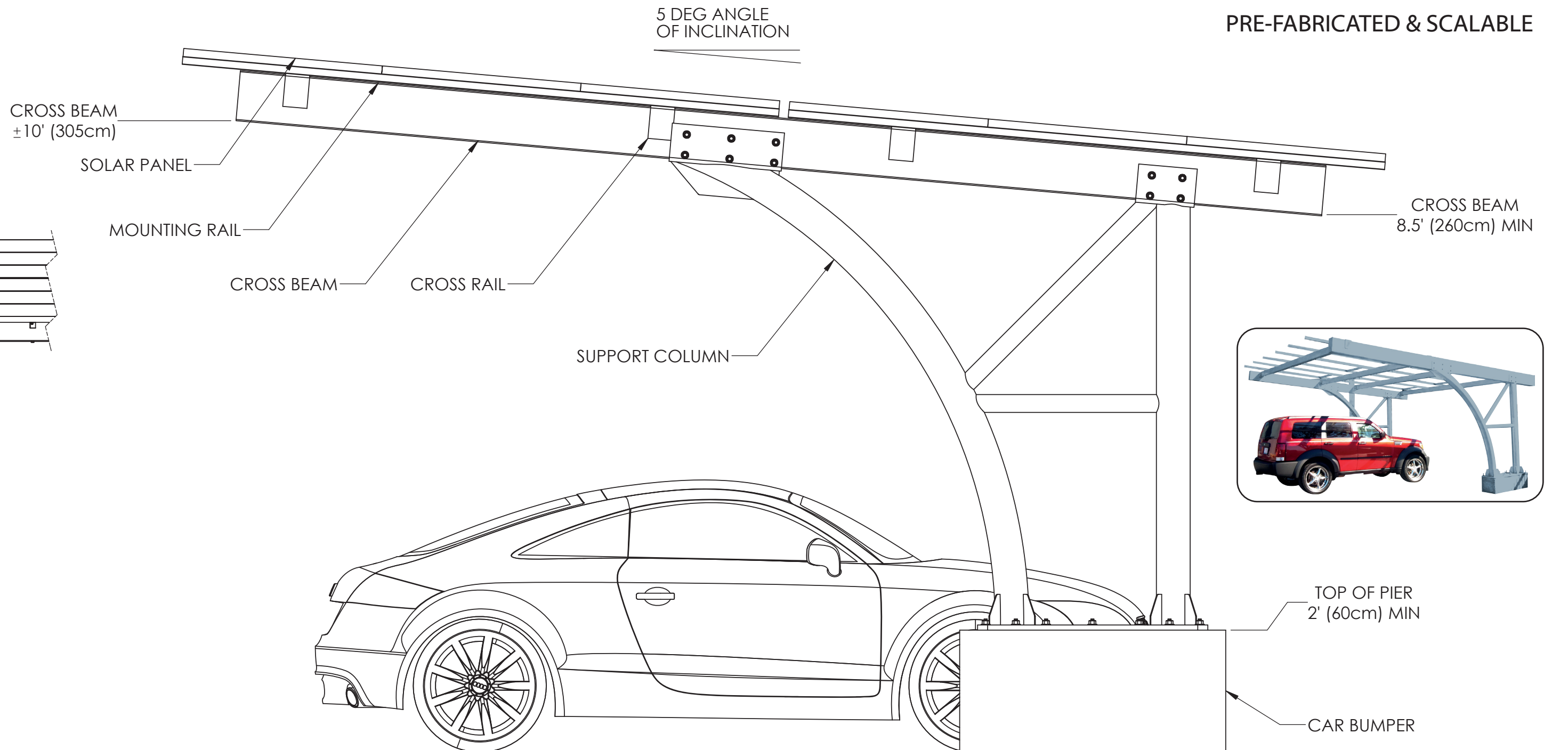
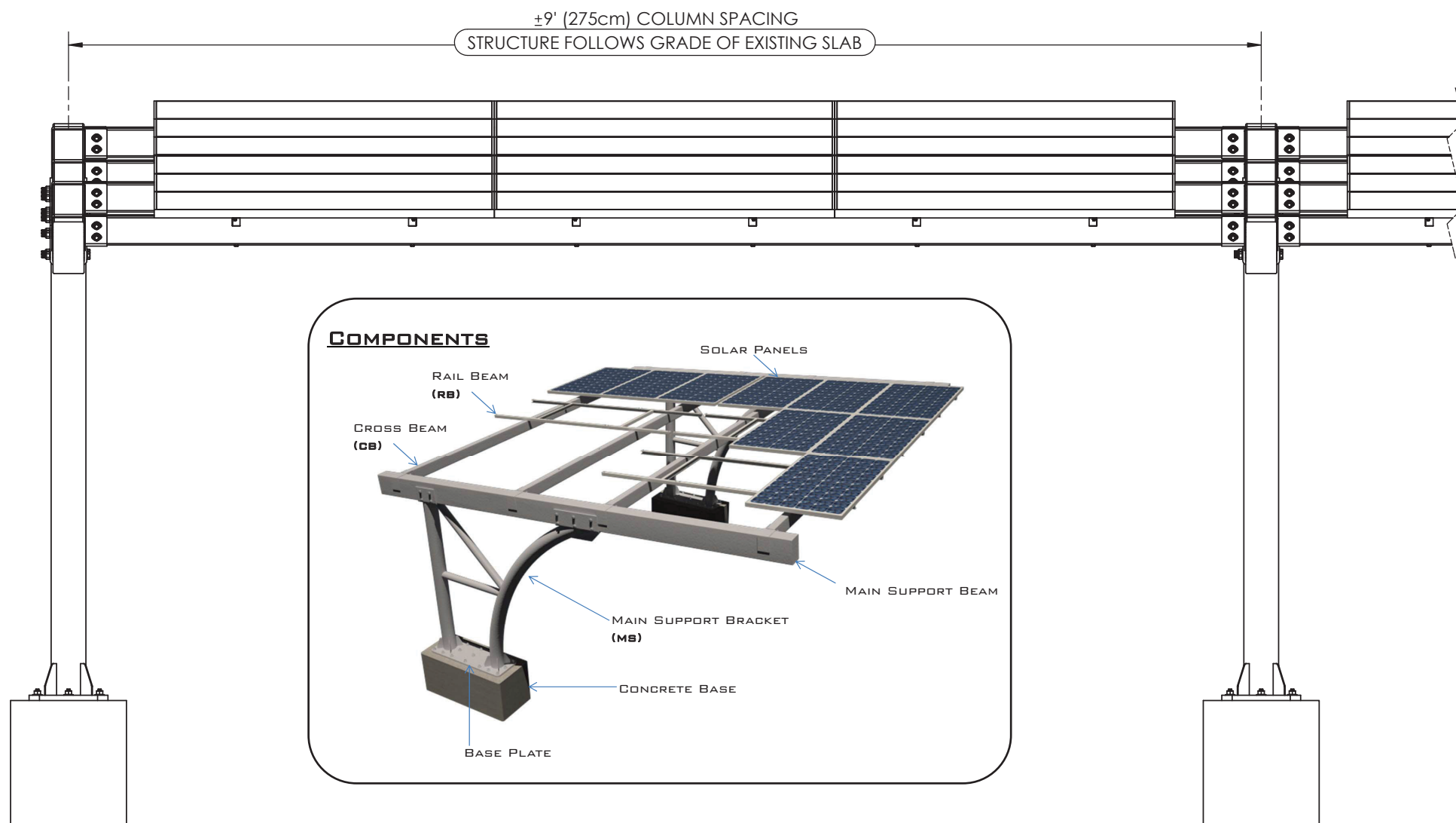

 Proud to be designed, engineered, and manufactured in the USA.
  Solutions For ARRA Projects.
 


 Orion Solar Racking
 2917 Vail Ave.
 Commerce, Ca 90040

 310-409-4616 ph
 310-409-4617 fax
www.OrionSolarRacking.com



 We Make Solar Installation Simple



PRE-FABRICATED & SCALABLE

Structure System:

- Structures: 2 cars/per unit
- 4kW – 5.2kW/per unit (18 / 21 solar modules, 220W-250W/pc)
- Power Generation Area/per unit: 29 meter square
- Slope angle: 5 degrees
- The structure and components are pre-engineered and pre-fabricated
- To meet/exceed industry standards and prevailing building codes

Dimensions:

- Structure Width/per unit: ~18' (5,500mm)
- Space Width/per car: ~9' (2,750mm)/car
- Structure Height (Front): >9.5' (3,000mm)
- Structure Height (Back): >8.2' (2,500mm)
- Structure is scalable to any project size

Structure Material:

Steel / Galvanizing
Shop fabricated in strict accordance with AISC Steel Building Structures and AWS welding requirements and codes

Foundations:

Concrete piers protect structural steel from vehicle damage
All exposed structural steel, bolts and welds are typically 2' above asphalt, minimizing corrosive effects from water and salt.

Universal PV Components:

Supports all commercially available solar panels inverters and exterior rated combiner boxes.

COMPONENT LIST



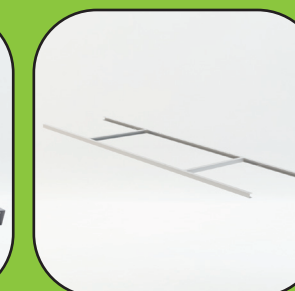
Pre-Weld Structure



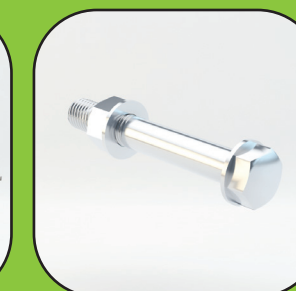
Main Beam



Cross Beam



Channel



No Welding
Nuts & Bolts Only