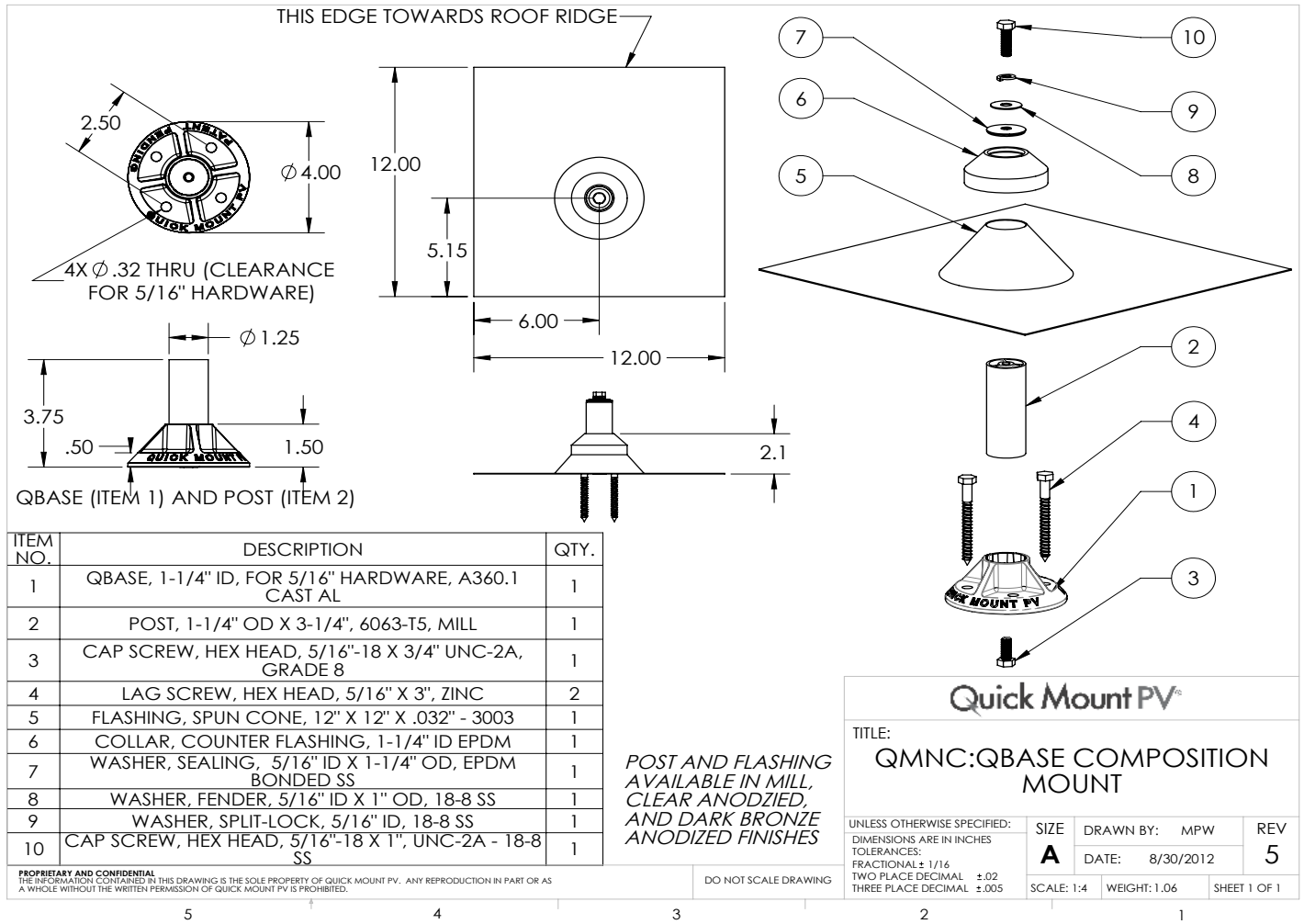


QBase Composition Mount | QMNC

(formerly called New Roof Composition Mount)



Lag pull-out (withdrawal) capacities (lbs) in typical lumber:

	Lag Bolt Specifications		
	Specific Gravity	5/16" shaft per 3" thread depth	5/16" shaft per 1" thread depth
Douglas Fir, Larch	.50	1330	266
Douglas Fir, South	.46	1175	235
Engelmann Spruce, Lodgepole Pine (MSR 1650 f & higher)	.46	1175	235
Hem, Fir	.43	1060	212
Hem, Fir (North)	.46	1175	235
Southern Pine	.55	1535	307
Spruce, Pine, Fir	.42	1025	205
Spruce, Pine, Fir (E of 2 million psi and higher grades of MSR and MEL)	.50	1330	266

Sources: Uniform Building Code; American Wood Council, NDS 2005, Table 11.2 A, 11.3.2 A

- Notes:**
- 1) Thread must be embedded in a rafter or other structural roof member.
 - 2) See IBC for required edge distances.
- **Note:** To maintain waterproofing it is important that the aluminum flashing is properly placed under one full course above the mounting block with at least some of the flashing extending up under the course above that as well. See instructions on back.

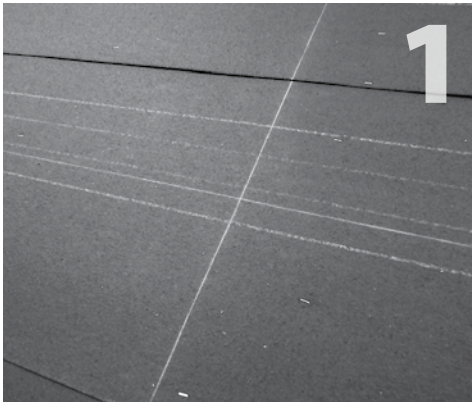


QBase Composition Mount Installation Instructions

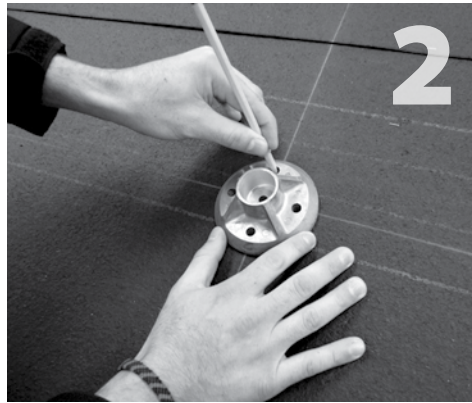
(formerly called New Roof Composition Mount)

Installation Tools Required: tape measure, roofing bar, chalk line, stud finder, caulking gun, one tube of appropriate sealant, drill with 7/32" bit, drill or impact gun with 1/2" deep socket.

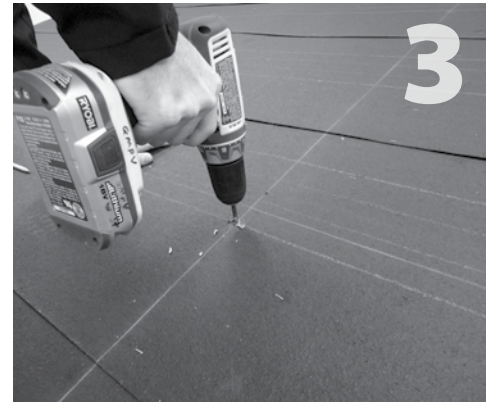
WARNING: Quick Mount PV products are NOT designed for and should NOT be used to anchor fall protection equipment.



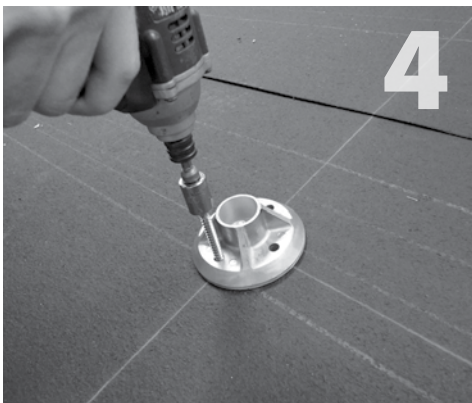
Layout your array out over the roofing paper using a chalk line to mark rafter centers and the rail location center.



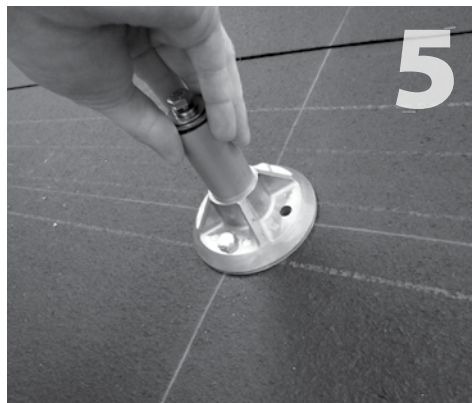
Align QBase vertical holes over center rafter mark and horizontal holes over snapped line. Mark holes for drilling.



Remove QBase and drill 2 each 7/32" pilot holes into rafter. Hold drill square to rafter.



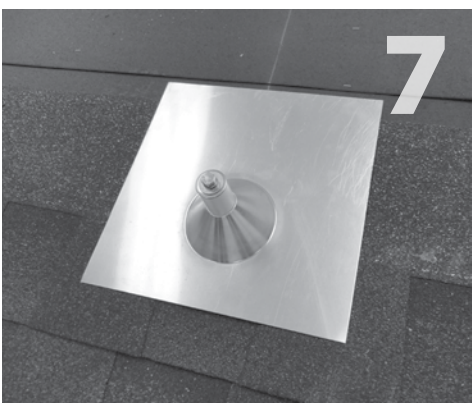
Fill pilot holes with appropriate sealant. Seat grade 8 bolt through bottom of QBase. Place QBase over drilled holes and secure lags in place, to a solid, snug fit.



Secure post to QBase turning post onto captive base plate bolt.



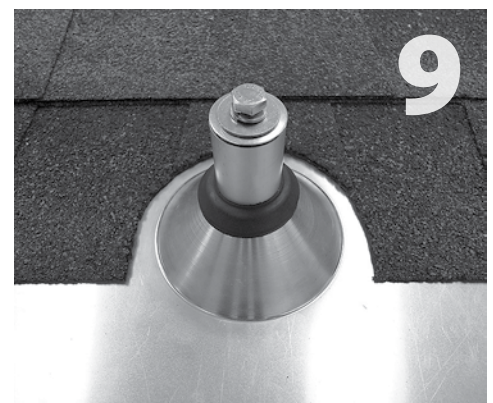
Allow roofing to proceed to the point that the flashing should be installed.



Install flashing over mount.



Allow roofing to proceed to the next mount course.



Apply sealant where post and flashing meet. Install EPDM counter flashing collar. Seal post with hardware if not installing racking right away.

Quick Mount PV[®]

925-478-8269 • www.quickmountpv.com • info@quickmountpv.com
2700 Mitchell Dr., Bldg. 2 • Walnut Creek, CA 94598