


# Standoff & Tilt Kits




## Versatility for any application



Tilt angles up to 30°



Multiple shaft lengths & bases for maximum adjustability



Single tool installation using a standard 1/2" socket



UL 2703 Certified for grounding/bonding, fire and mechanical load

**Start Mounting Solar on Your Roof Today**

**RESOURCES**  
**DESIGN**  
**WHERE TO BUY**

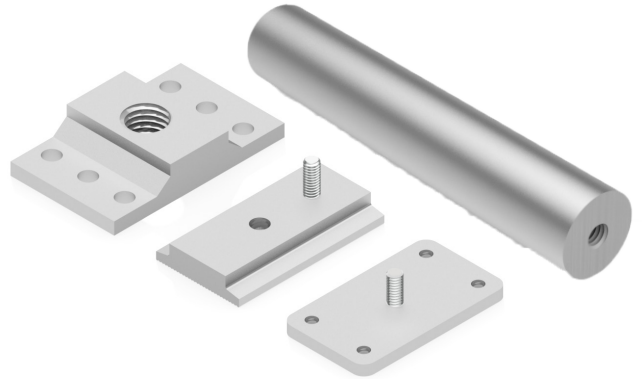
[snapnrack.com/resources](https://snapnrack.com/resources)  
[snapnrack.com/configurator](https://snapnrack.com/configurator)  
[snapnrack.com/where-to-buy](https://snapnrack.com/where-to-buy)

# The SnapNrack Ultra Rail Standoff Kit

is an innovative solution for use on tile roofs or other thick roofing materials. Standoff Kits are engineered to ensure maximum adjustability for a clean, level installation on the most irregular roof surfaces.

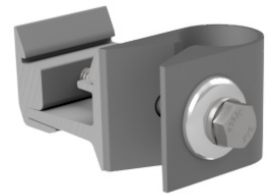
## Standoff Shaft & Base

- 5.5", 7", and 8.5" Standoff Shaft lengths available
- Standoffs easily thread into base
- 3 bases with 1-hole, 4-hole and 6-hole options
- Heavy Duty 6-hole base for extra strength



## Standoff Clamp Assembly

- Clamp includes Ultra Rail Mount for easy rail attachment
- Single 1/2" socket secures clamp and rail to shaft.



# The SnapNrack Ultra Rail Tilt Kits

provide a versatile solution for mounting tilt systems on flat roofs and pitched roofs up to 23°. Simple design makes installation straightforward using proper tilt legs.



## Tilt Kits

- Includes L Foot & Ultra Rail Mount assembly for angled mounting of panels, no custom parts
- Variable Degree Tilt Ups are available for metal roof and flat roof applications.

# Quality. Performance. Innovation.

SnapNrack solutions are focused on simplifying the installation experience through intuitive products and the best wire management in the industry.

**SnapNrack™**  
Solar Mounting Solutions

877-732-2860

[www.snapnrack.com](http://www.snapnrack.com)

[contact@snapnrack.com](mailto:contact@snapnrack.com)

© 2019 by SnapNrack Solar Mounting Solutions. All rights reserved