



Mount on all terrains, in no time.

The IronRidge Ground Mount System combines our XR1000 rails with locally-sourced steel pipes, or mechanical tubing, to create a cost-effective structure capable of handling any site or terrain challenge.

Installation is simple with only a few structural components and no drilling, welding, or heavy machinery required. In addition, the system works with a variety of foundation options, including concrete piers and driven piles.



Rugged Construction

Engineered steel and aluminum components ensure durability.



PE Certified

Pre-stamped engineering letters available in most states.



Simple Assembly

Just a few simple components and no heavy equipment.



Design Software

Online tool generates engineering values and bill of materials.



Flexible Architecture

Multiple foundation and array configuration options.



20 Year Warranty

Twice the protection offered by competitors.



360° Product Tour
Visit ironridge.com

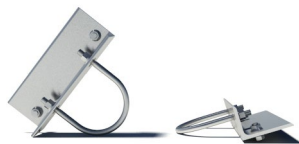
Substructure

Top Caps



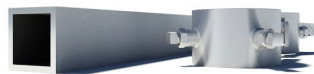
Connect vertical and cross pipes.

Rail Connectors



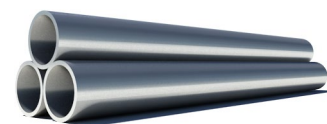
Attach Rail Assembly to horizontal pipes.

Diagonal Braces



Optional Brace provides additional support.

Cross Pipe & Piers



Steel pipes or mechanical tubing for substructure.

Rail Assembly

XR1000 Rails



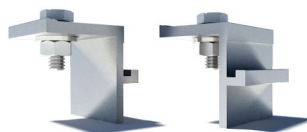
Curved rails increase spanning capabilities.

Top-Down Clamps



Secure modules to rails and substructure.

Under Clamps



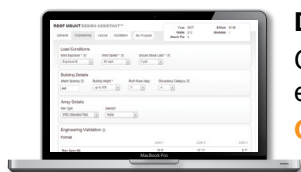
Alternative clamps for pre-attaching modules to rails.

Accessories



Wire Clips and End Caps provide a finished look.

Resources



Design Assistant

Go from rough layout to fully engineered system. For free.

Go to ironridge.com/gm



NABCEP Certified Training

Earn free continuing education credits, while learning more about our systems.

Go to ironridge.com/training