

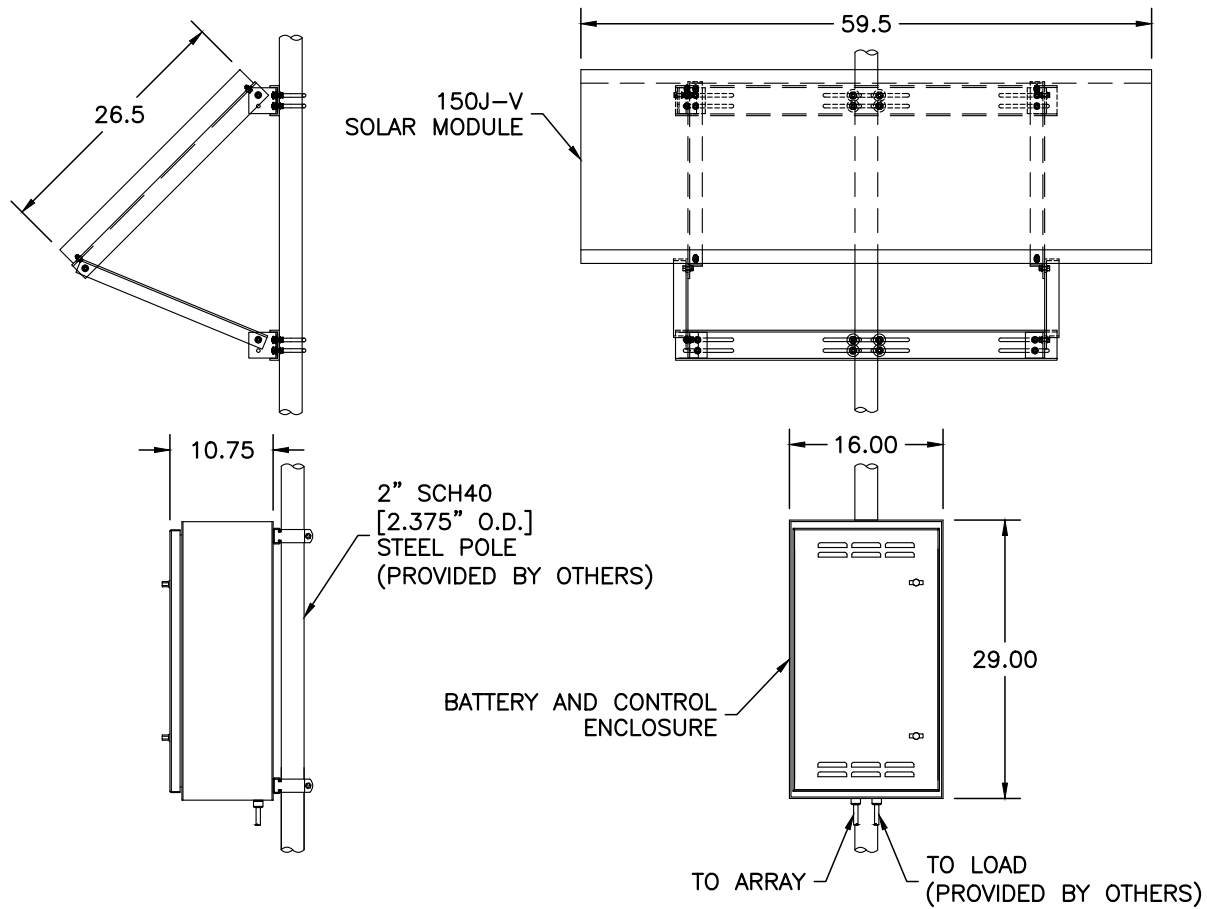
- NOTES:
1. CONNECTIONS TO ARRAY TO BE COMPLETED IN THE FIELD.
 2. CONNECTIONS TO BATTERIES TO BE COMPLETED IN THE FIELD.
 3. BATTERIES TO BE INSTALLED IN THE FIELD.
 4. UNLESS OTHERWISE SPECIFIED, WIRING TO BE #10 RED POSITIVE (+), BLACK NEGATIVE (-), GREEN GROUND (⊕).
 5. GROUND POINT ESTABLISHED BY CUSTOMER.



OWNERSHIP

COPYRIGHT ©2023 THE ABOVE DRAWINGS, SPECIFICATIONS, IDEAS, DESIGNS, AND ARRANGEMENTS ARE AND SHALL REMAIN THE PROPERTY OF SOLAR ELECTRIC SUPPLY AND NO PART THEREOF SHALL BE COPIED, DISCLOSED TO OTHERS, OR USED IN CONNECTION WITH ANY WORK OR PROJECT OTHER THAN THE SPECIFIED PROJECT FOR WHICH THEY HAVE BEEN PREPARED AND DEVELOPED WITHOUT THE WRITTEN CONSENT OF SOLAR ELECTRIC SUPPLY. VISUAL CONTACT WITH THESE PLANS OR SPECIFICATIONS SHALL CONSTITUTE CONCLUSIVE EVIDENCE OF ACCEPTANCE OF THESE RESTRICTIONS.

WIRING DIAGRAM		MAPPS 150-216-12	
UNITS		UNLESS OTHERWISE SPECIFIED: PRIMARY UNITS ARE: INCHES SECONDARY UNITS ARE: [mm]	
REVISIONS		APPROVALS NAME	
REV	REVISED BY	DATE	DATE
			26.AUG.19
			19.JAN.23
MISC		DRAWN C. LEONARD	
		APPROVED E. RIVAS	
SCALE	DRAWING NUMBER	SIZE	
N/A	SD50-0148-SES		
	B.O.M. NUMBER		
	SB50-0148-SES		A
	SHEET 1 of 3		



OWNERSHIP

COPYRIGHT ©2023 THE ABOVE DRAWINGS, SPECIFICATIONS, IDEAS, DESIGNS, AND ARRANGEMENTS ARE AND SHALL REMAIN THE PROPERTY OF SOLAR ELECTRIC SUPPLY AND NO PART THEREOF SHALL BE COPIED, DISCLOSED TO OTHERS, OR USED IN CONNECTION WITH ANY WORK OR PROJECT OTHER THAN THE SPECIFIED PROJECT FOR WHICH THEY HAVE BEEN PREPARED AND DEVELOPED WITHOUT THE WRITTEN CONSENT OF SOLAR ELECTRIC SUPPLY. VISUAL CONTACT WITH THESE PLANS OR SPECIFICATIONS SHALL CONSTITUTE CONCLUSIVE EVIDENCE OF ACCEPTANCE OF THESE RESTRICTIONS.

SITE LAYOUT

MAPPS 150-216-12

UNITS
UNLESS OTHERWISE SPECIFIED:
PRIMARY UNITS ARE: INCHES
SECONDARY UNITS ARE: [mm]

REVISIONS

REV	REVISED BY	DATE

MISC

SCALE	DRAWING NUMBER	SIZE
N/A	SD50-0148-SES	A
	B.O.M. NUMBER	
	SB50-0148-SES	
	SHEET 2 of 3	

APPROVALS NAME

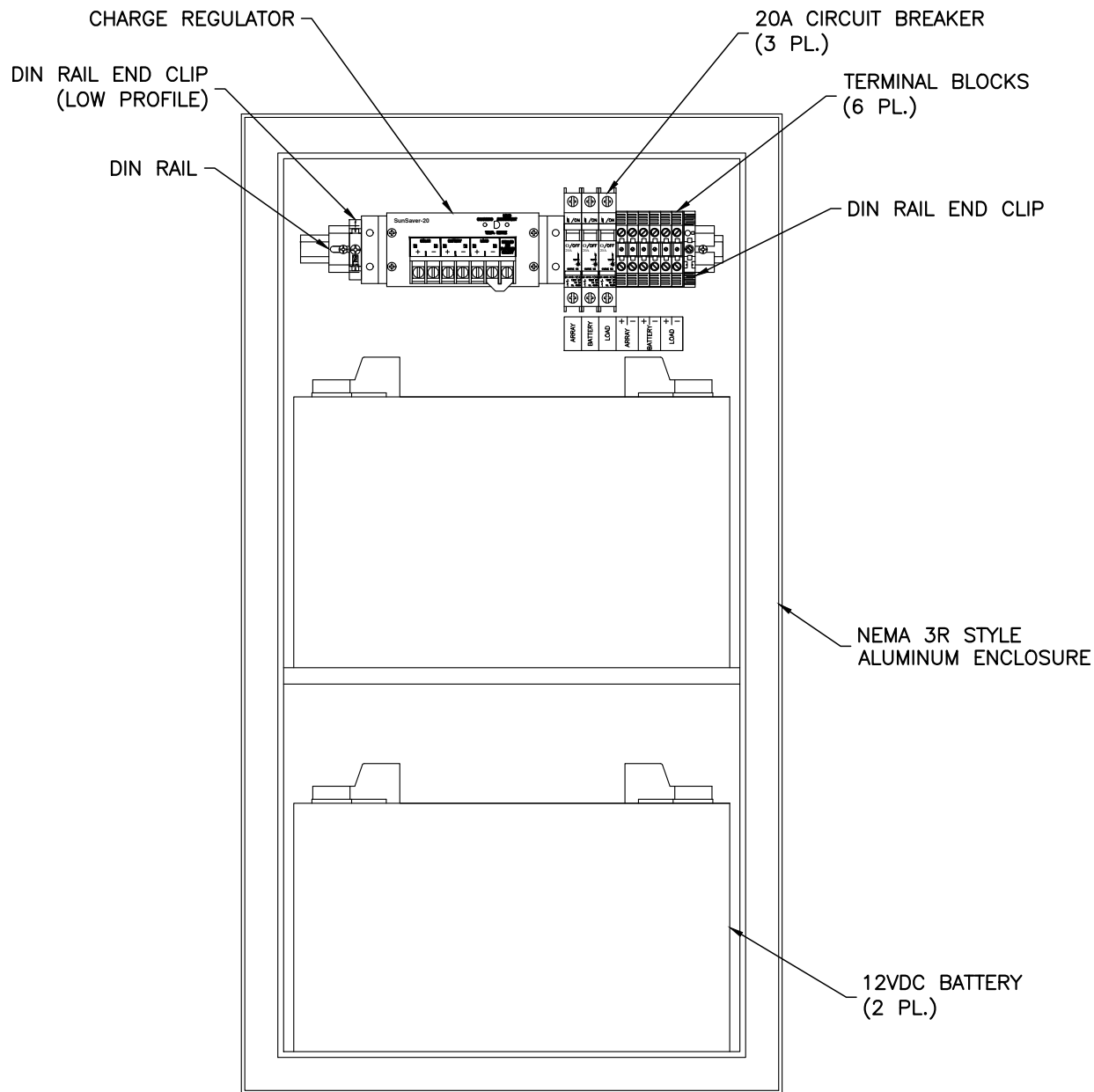
DATE

26.AUG.19

19.JAN.23

DRAWN C. LEONARD

APPROVED E. RIVAS



- NOTES:
- BATTERIES TO HAVE EXPANDED POLYSTYRENE FOAM INSULATION ON ALL SIDES AND DOOR.
 - ENCLOSURE DOOR NOT SHOWN FOR CLARITY.



OWNERSHIP

COPYRIGHT ©2023 THE ABOVE DRAWINGS, SPECIFICATIONS, IDEAS, DESIGNS, AND ARRANGEMENTS ARE AND SHALL REMAIN THE PROPERTY OF SOLAR ELECTRIC SUPPLY AND NO PART THEREOF SHALL BE COPIED, DISCLOSED TO OTHERS, OR USED IN CONNECTION WITH ANY WORK OR PROJECT OTHER THAN THE SPECIFIED PROJECT FOR WHICH THEY HAVE BEEN PREPARED AND DEVELOPED WITHOUT THE WRITTEN CONSENT OF SOLAR ELECTRIC SUPPLY. VISUAL CONTACT WITH THESE PLANS OR SPECIFICATIONS SHALL CONSTITUTE CONCLUSIVE EVIDENCE OF ACCEPTANCE OF THESE RESTRICTIONS.

ENCLOSURE LAYOUT
MAPPS 150-216-12

UNITS

UNLESS OTHERWISE SPECIFIED:
PRIMARY UNITS ARE: INCHES
SECONDARY UNITS ARE: [mm]

REVISIONS

REV	REVISED BY	DATE

MISC

SCALE	N/A	DRAWING NUMBER	SD50-0148-SES	SIZE	A
		B.O.M. NUMBER	SB50-0148-SES		
		SHEET	3 of 3		

APPROVALS	NAME	DATE
	DRAWN C. LEONARD	26.AUG.19
	APPROVED E. RIVAS	19.JAN.23