

5. GROUND POINT ESTABLISHED BY CUSTOMER.
 4. UNLESS OTHERWISE SPECIFIED, WIRING TO BE #12 RED POSITIVE (+), BLACK NEGATIVE (-), GREEN GROUND (\perp).
 3. BATTERIES TO BE INSTALLED IN THE FIELD.
 2. CONNECTIONS TO BATTERIES TO BE COMPLETED IN THE FIELD.
 1. CONNECTIONS TO ARRAY TO BE COMPLETED IN THE FIELD.
- NOTES:



OWNERSHIP

COPYRIGHT ©2018 THE ABOVE DRAWINGS, SPECIFICATIONS, IDEAS, DESIGNS, AND ARRANGEMENTS ARE AND SHALL REMAIN THE PROPERTY OF SOLAR ELECTRIC SUPPLY AND NO PART THEREOF SHALL BE COPIED, DISCLOSED TO OTHERS, OR USED IN CONNECTION WITH ANY WORK OR PROJECT OTHER THAN THE SPECIFIED PROJECT FOR WHICH THEY HAVE BEEN PREPARED AND DEVELOPED WITHOUT THE WRITTEN CONSENT OF SOLAR ELECTRIC SUPPLY. VISUAL CONTACT WITH THESE PLANS OR SPECIFICATIONS SHALL CONSTITUTE CONCLUSIVE EVIDENCE OF ACCEPTANCE OF THESE RESTRICTIONS.

WIRING DIAGRAM

MAPPS 20-36-12

UNITS
UNLESS OTHERWISE SPECIFIED:
PRIMARY UNITS ARE: INCHES
SECONDARY UNITS ARE: [mm]

REVISIONS

REV	REVISED BY	DATE

APPROVALS

NAME	DATE

MISC

DRAWING NUMBER

SD50-0043-3R

B.O.M. NUMBER

SB50-0043-3R

DATE
06.NOV.18
07.NOV.18

NAME
C. LEONARD
E. RIVAS

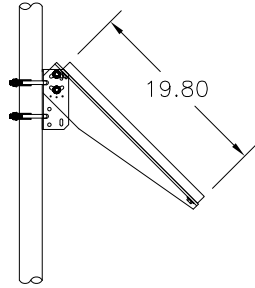
SCALE

N/A

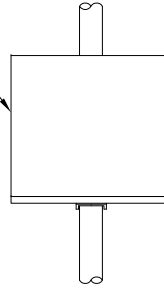
SIZE

A

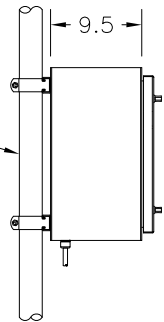
SHEET 1 OF 3



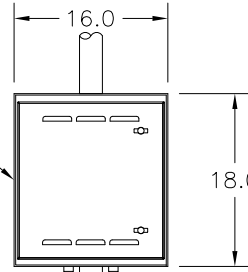
20J-V SOLAR MODULE



2IN SCH40
[2-3/8IN O.D.]
STEEL POLE
(PROVIDED BY OTHERS)



BATTERY AND CONTROL ENCLOSURE



TO ARRAY TO LOAD
(PROVIDED BY OTHERS)

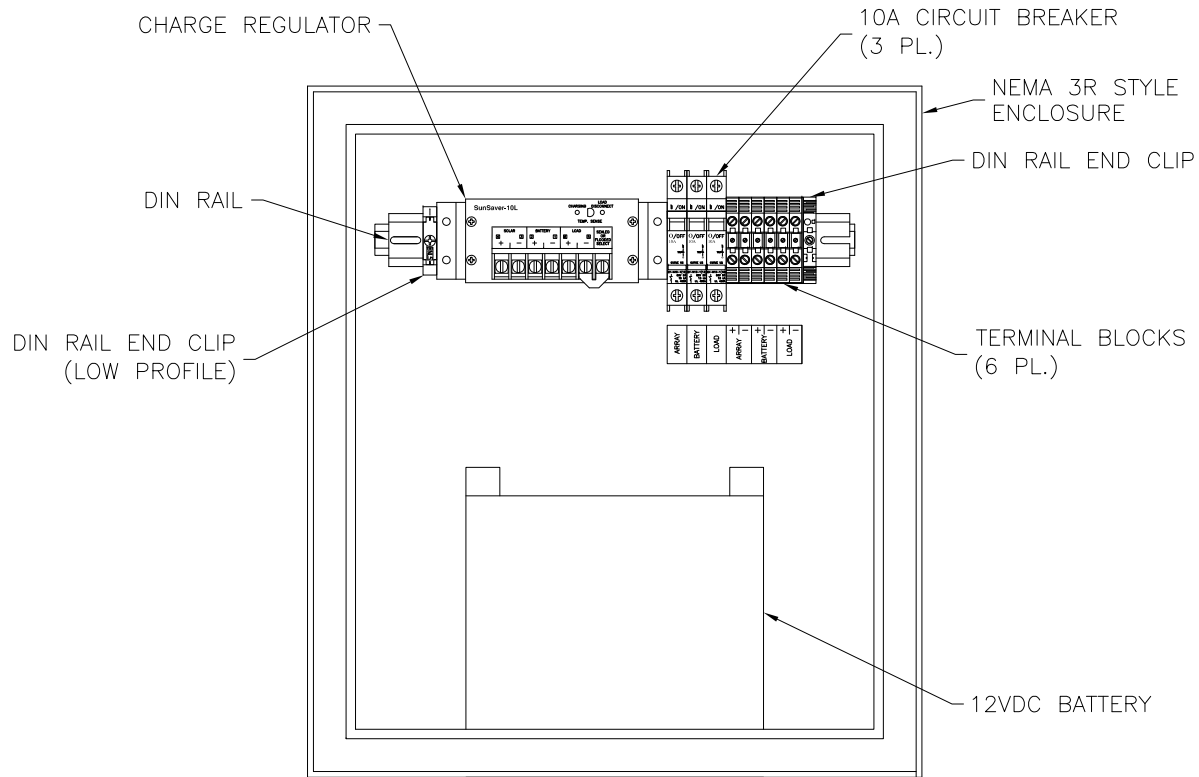


OWNERSHIP

COPYRIGHT ©2018 THE ABOVE DRAWINGS, SPECIFICATIONS, IDEAS, DESIGNS, AND ARRANGEMENTS ARE AND SHALL REMAIN THE PROPERTY OF SOLAR ELECTRIC SUPPLY AND NO PART THEREOF SHALL BE COPIED, DISCLOSED TO OTHERS, OR USED IN CONNECTION WITH ANY WORK OR PROJECT OTHER THAN THE SPECIFIED PROJECT FOR WHICH THEY HAVE BEEN PREPARED AND DEVELOPED WITHOUT THE WRITTEN CONSENT OF SOLAR ELECTRIC SUPPLY. VISUAL CONTACT WITH THESE PLANS OR SPECIFICATIONS SHALL CONSTITUTE CONCLUSIVE EVIDENCE OF ACCEPTANCE OF THESE RESTRICTIONS.

SITE LAYOUT		DATE	
MAPPS 20-36-12		06.NOV.18	
UNITS		APPROVALS NAME	
UNLESS OTHERWISE SPECIFIED: PRIMARY UNITS ARE: INCHES SECONDARY UNITS ARE: [mm]		DRAWN C. LEONARD	
REVISIONS		APPROVED E. RIVAS	
REV	REVISED BY	DATE	
MISC			
SCALE	DRAWING NUMBER	SIZE	
N/A	SD50-0043-3R	A	
	B.O.M. NUMBER		
	SB50-0043-3R		
SHEET 2 OF 3			

PRINTED: 11.07.18 — 4:00 PM



2. BATTERY TO HAVE EXPANDED POLYSTYRENE FOAM INSULATION ON ALL SIDES AND DOOR.
1. ENCLOSURE DOOR NOT SHOWN FOR CLARITY.

NOTES:



OWNERSHIP

COPYRIGHT ©2018 THE ABOVE DRAWINGS, SPECIFICATIONS, IDEAS, DESIGNS, AND ARRANGEMENTS ARE AND SHALL REMAIN THE PROPERTY OF SOLAR ELECTRIC SUPPLY AND NO PART THEREOF SHALL BE COPIED, DISCLOSED TO OTHERS, OR USED IN CONNECTION WITH ANY WORK OR PROJECT OTHER THAN THE SPECIFIED PROJECT FOR WHICH THEY HAVE BEEN PREPARED AND DEVELOPED WITHOUT THE WRITTEN CONSENT OF SOLAR ELECTRIC SUPPLY. VISUAL CONTACT WITH THESE PLANS OR SPECIFICATIONS SHALL CONSTITUTE CONCLUSIVE EVIDENCE OF ACCEPTANCE OF THESE RESTRICTIONS.

ENCLOSURE LAYOUT
MAPPS 20-36-12

UNITS

UNLESS OTHERWISE SPECIFIED:
PRIMARY UNITS ARE: INCHES
SECONDARY UNITS ARE: [mm]

REVISIONS

REV	REVISED BY	DATE

MISC

SCALE N/A	DRAWING NUMBER SD50-0043-3R	APPROVALS DRAWN C. LEONARD APPROVED E. RIVAS	DATE 06.NOV.18
	B.O.M. NUMBER SB50-0043-3R		07.NOV.18
	SHEET 3 OF 3		

SIZE
A