

# PACKAGING & SHIPMENT SPECIFICATIONS

Applicable for the following REC solar panels:

- REC N-Peak Series
- REC N-Peak 2 Series
- REC TwinPeak 3 Mono Series
- REC TwinPeak 4 Series
- REC N-Peak Black Series
- REC N-Peak 2 Black Series
- REC TwinPeak 3 Mono Black Series
- REC TwinPeak 4 Black Series
- REC TwinPeak 3S Mono 72 Series



# CONTENTS

<b>INTRODUCTION</b> .....	<b>3</b>
Quality.....	3
Pallet Handling.....	3
Recycling.....	3
<b>REC N-PEAK SERIES</b> .....	<b>4</b>
REC N-Peak Series.....	4
REC N-Peak Black Series.....	4
<b>REC N-PEAK 2 SERIES</b> .....	<b>5</b>
REC N-Peak 2 Series.....	5
REC N-Peak 2 Black Series.....	5
<b>REC TWINPEAK 3 SERIES</b> .....	<b>6</b>
REC TwinPeak 3 Mono Series.....	6
REC TwinPeak 3 Mono Black Series.....	6
<b>REC TWINPEAK 4 SERIES</b> .....	<b>7</b>
REC TwinPeak 4 Series.....	7
REC TwinPeak 4 Black Series.....	7
<b>REC TWINPEAK SERIES (72-CELL)</b> .....	<b>8</b>
REC TwinPeak 3S Mono 72 Series.....	8

# INTRODUCTION

REC believes that the packaging of our products is just as important as the product itself. To ensure our solar panels arrive with our customers in as good condition as possible, REC takes every care to ensure a high quality level of packaging and uses international testing standards to ensure the panels reach their destination in the best condition. Except where specifically stated, the information given on the following pages is relevant to all modules in the product family named and is therefore applicable to all product variants, e.g., different colored frames, backsheets, and/or cell types. The images shown are a generic representation of the instructions regardless of color or exact design.



## PALLET HANDLING

This document contains instructions concerning the use and handling of pallets of REC solar panels. Following these instructions will ensure that the panels are in the best condition upon arrival at the installation site. Misuse or failure to follow these procedures may lead to damage or injury, and may invalidate the warranty on the product.

## QUALITY

REC performs a quality check on all pallets before and during loading. Vehicles will only be loaded if they are deemed safe and serviceable. During transportation, the pallets are stably loaded in protected containers with air bags between them to secure them in position. The freight company and driver are responsible for ensuring suitable load safety for each delivery vehicle. Vehicles without suitable load safety measures will not be loaded. Loading without the use of air bags or loading belts to secure the pallets may lead to damage to the pallet(s) and/or module(s) during transportation which may invalidate the warranty. If using loading belts to secure pallets, ensure these are correctly fitted as over-tightening may cause damage to the modules or pallet(s).



## RECYCLING

REC makes every effort to ensure the panel packaging is kept to a minimum and that environmentally-friendly materials are used wherever possible. This minimizes waste and discarded items to dispose of at the installation site. The wooden pallets can be re-used or recycled. The paper and cardboard packaging used on REC pallets can be also be widely recycled and the protective wrapping and panel separating blocks are also recyclable in many areas. Please check for all applicable procedures and recycle all packaging and panels according to local guidelines and regulations. REC makes every effort to ensure environmentally-friendly packaging materials are used. Please recycle whenever possible.

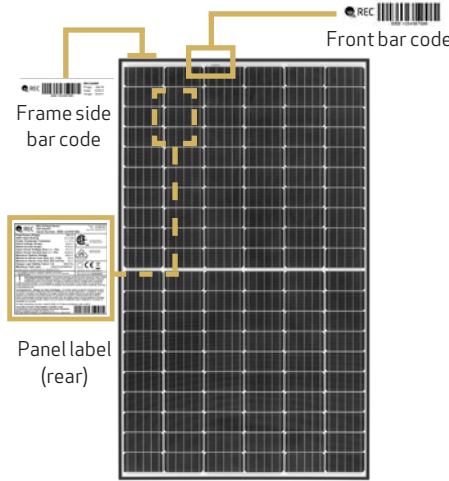
# REC N-PEAK SERIES

These packaging specifications are applicable to the following products:  
 REC N-Peak Series      REC N-Peak Black Series

## PALLET FRONT VIEW (DOUBLE STACKED)



## PANEL IDENTIFICATION



## PALLET SHIPMENT DIMENSIONS

Length of pallet:	1712 mm (68 in)
Width of pallet:	1045 mm (41 in)
Height of single pallet stack:	1220 mm (48 in)
Height of double pallet stack:	2440 mm (96 in)
Pallet weight:	40 kg (90 lbs)
Stack weight (pallet + panels):	ca. 650 kg (1450 lbs)

## DELIVERY INFORMATION

Panels per pallet:	33
Panels per GP/high cube container (40 ft):	924 (28 pallets)
Panels per 13.6 m truck:	990 (30 pallets)
Panels per 53 ft truck:	1023 (31 pallets)

## DELIVERY DOCUMENTATION

Documentation is located on short side of pallet.  
 Pallet documentation includes:

- Module flash data
- Serial number
- Product name
- Watt class

## PACKAGING MATERIAL

Pallet:	Wood
Foam pad:	Polyurethane Polyether Polyol
Top cover:	Corrugated cardboard
Edge protectors:	Coreboard - Kraft
Corner pieces and spacers:	HDPE

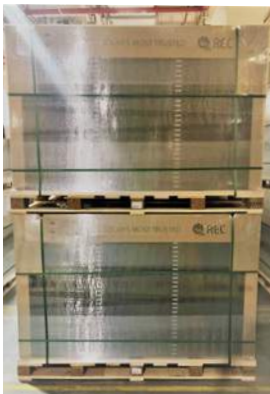
## STORAGE AND TRANSPORTATION

Stacking for storage: 2 pallets max  
 Stacking for transportation: 2 pallets max

**Note:** When double stacking pallets, ensure the upper pallet sits securely on the edge protector to avoid damage to the lower pallet during transportation or handling

**Note:** Pallets delivered stacked are not bound together.

## PALLET SIDE VIEW (DOUBLE STACKED)



## PALLET STACKING



## PACKAGING DOCUMENTATION

**REC320NP**

**Part: 6001887**      **Pallet No: L1240124\_AAAA**

No	Serial Number	Imp(A)	Pmp(W)	No	Serial Number	Imp(A)	Pmp(W)
1	2087788084	9.659	323.9	19	2087788096	9.629	323.9
2	2087788086	9.647	323.9	19	2087788107	9.644	323.9
3	2087788093	9.684	323.9	20	2087788209	9.631	323.9
4	2087788106	9.663	323.8	21	2087788098	9.636	323.8
5	2087788104	9.672	324.6	22	2087788086	9.639	322.4
6	2087788108	9.609	323.3	23	2087788203	9.647	323.8
7	2087788106	9.641	323.9	24	2087788062	9.651	324.2
8	2087788107	9.634	323.5	25	2087788079	9.649	323.4
9	2087788032	9.642	324.8	26	2087788021	9.641	324.8
10	2087788077	9.655	323.1	27	2087788042	9.653	324.4
11	2087788120	9.656	324.4	28	2087788047	9.656	323.6
12	2087788078	9.647	324.1	29	2087788048	9.662	323.8
13	2087788076	9.671	324.8	30	2087788066	9.656	323.9
14	2087788079	9.661	324.4	31	2087788063	9.655	323.6
15	2087788087	9.668	323.6	32	2087788052	9.655	324.1
16	2087788088	9.650	323.5	33	2087788109	9.636	323.2
17	2087788108	9.655	324.7				

**Attention**

Weight: 650 kg (1450 lbs)  
 Improper handling will damage the content

Quality Stamp

14/05/2019 10:50  
 ACCEPTED

**Vorsicht!**

Gewicht: 650 kg (1450 lbs)  
 Unsachgemäßer Transport führt zur Beschädigung der Ware

Panel Handling

**Attention**  
 Wear clean gloves

Installation instructions:

Installationsanleitungen:

Guides d'emploi:

設置説明書:

www.recgroup.com/singapore

**Made in Singapore**

Modules: 33

## MINIMUM FORK LENGTHS FOR TRANSPORTATION

		Single/Double stack only
Forklift	Long side	1.2 m (47 in) Loading & unloading of container only
	Short side	1.5 m (59 in)
Pallet jack	Long side	<b>X</b>
	Short side	1.5 m (59 in)

**Note:** Forks must be spaced a minimum of 500 mm apart  
 Handlers must ensure that vehicles used for REC pallets can handle the specified load safely.

**Note:** Specifications subject to change without notice

- Pallet No. 1 is the top module in a stack
- Pallet No. 33 is the lowest module in a stack
- Pallet documentation shows:
  - Module serial number
  - Module bar code
  - Manufacturing date
  - Electrical data ( $I_{SC}$ ,  $I_{MP}$ ,  $V_{OC}$ ,  $V_{MP}$ ,  $P_{MP}$ , Fill Factor)

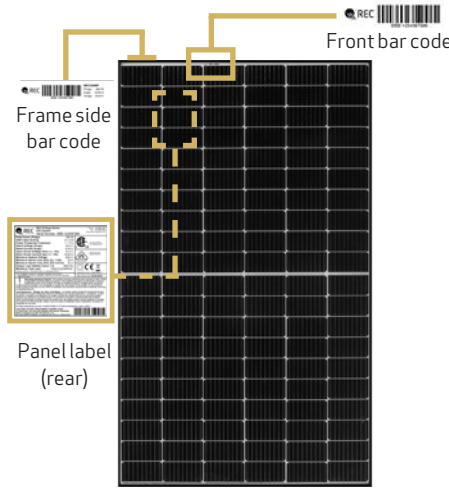
# REC N-PEAK 2 SERIES

These packaging specifications are applicable to the following products:  
 REC N-Peak 2 Series      REC N-Peak 2 Black Series

## PALLET FRONT VIEW (DOUBLE STACKED)



## PANEL IDENTIFICATION



## PALLET SHIPMENT DIMENSIONS

Length of pallet:	1800 mm (71 in)
Width of pallet:	1080 mm (42.5 in)
Height of single pallet stack:	1225 mm (48 in)
Height of double pallet stack:	2450 mm (96 in)
Pallet weight:	44 kg (93 lbs)
Stack weight (pallet + panels):	ca. 705 kg (1554 lbs)

## DELIVERY INFORMATION

Panels per pallet:	33
Panels per GP/high cube container (40 ft):	858 (26 pallets)
Panels per 13.6 m truck:	924 (28 pallets)
Panels per 53 ft truck:	924 (28 pallets)

## DELIVERY DOCUMENTATION

Documentation is located on short side of pallet.  
 Pallet documentation includes:

- Module flash data
- Serial number
- Product name
- Watt class

## PACKAGING MATERIAL

Pallet:	Wood
Foam pad:	Polyurethane Polyether Polyol
Top cover:	Corrugated cardboard
Edge protectors:	Coreboard - Kraft
Corner pieces and spacers:	HDPE

## STORAGE AND TRANSPORTATION

Stacking for storage:	2 pallets max
Stacking for transportation:	2 pallets max

**Note:** When double stacking pallets, ensure the upper pallet sits securely on the edge protector to avoid damage to the lower pallet during transportation or handling

**Note:** Pallets delivered stacked are not bound together.

## PALLET SIDE VIEW (DOUBLE STACKED)



## PALLET STACKING



## PACKAGING DOCUMENTATION

**REC365NP2**

Part: **6002511**      Pallet No: **L1293500\_AAAA**

No.	Serial Number	Top	Imp[A]	Prog[W]	No.	Serial Number	Imp[A]	Prog[W]
1)	2089222897	18.71	366.3	18)	2089222866	18.67	365.9	
2)	2089222864	18.68	366.7	19)	2089222843	18.70	367.6	
3)	2089222729	18.72	368.7	20)	2089222849	18.69	366.1	
4)	2089222841	18.72	368.3	21)	2089222868	18.68	365.9	
5)	2089222860	18.72	366.9	22)	2089222848	18.70	367.5	
6)	2089222894	18.74	368.1	23)	2089222857	18.70	368.2	
7)	2089222828	18.70	366.3	24)	2089222843	18.71	367.9	
8)	2089222809	18.71	366.4	25)	2089222855	18.71	367.6	
9)	2089222827	18.72	366.9	26)	2089222852	18.70	368.8	
10)	2089222884	18.73	368.7	27)	2089222886	18.70	368.2	
11)	2089222794	18.70	366.5	28)	2089222854	18.71	368.3	
12)	2089222845	18.68	366.3	29)	2089222858	18.69	367.6	
13)	2089222885	18.69	366.7	30)	2089222853	18.73	369.7	
14)	2089222847	18.67	366.2	31)	2089222874	18.69	367.9	
15)	2089222882	18.71	369.0	32)	2089222883	18.69	366.8	
17)	2089222797	18.65	365.3	33)	2089222875	18.73	368.9	

Modules: 33

**Attention**      **Vorsicht!**

Weight: 705 kg (1554 lbs)  
 Improper handling will damage the content

Weight: 705 kg (1554 lbs)  
 Unsachgemäßer Transport führt zur Beschädigung der Ware

Quality Stamp      Panel Handling

QUALITY 14/09/2021 14:45  
 ACCEPTED

Attention      Wear clean gloves

Installation instructions:  
 Installationsanleitungen:  
 Guides d'emploi:  
 設置説明書:  
[www.recgroup.com/downloads](http://www.recgroup.com/downloads)

**Made in Singapore**

## MINIMUM FORK LENGTHS FOR TRANSPORTATION

		Single/Double stack only
Forklift	Long side	1.2 m (47 in) Loading & unloading of container only
	Short side	1.5 m (59 in)
Pallet jack	Long side	X
	Short side	1.5 m (59 in)

**Note:** Forks must be spaced a minimum of 500 mm apart  
 Handlers must ensure that vehicles used for REC pallets can handle the specified load safely.

**Note:** Specifications subject to change without notice

- Pallet No. 1 is the top module in a stack
- Pallet No. 33 is the lowest module in a stack
- Pallet documentation shows:
  - Module serial number
  - Module bar code
  - Manufacturing date
  - Electrical data ( $I_{SC}$ ,  $I_{MP}$ ,  $V_{OC}$ ,  $V_{MP}$ ,  $P_{MP}$ , Fill Factor)

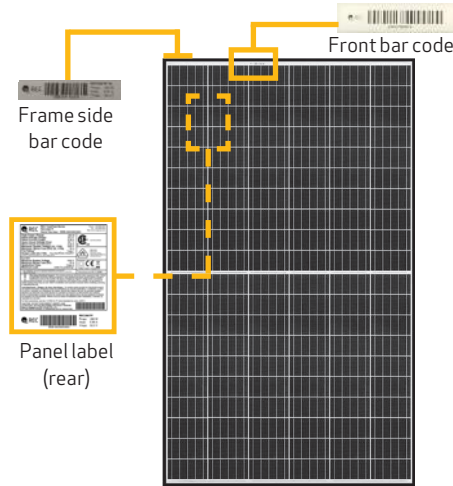
# REC TWINPEAK 3 SERIES

These packaging specifications are applicable to the following products:  
 REC TwinPeak 3 Mono Series    REC TwinPeak 3 Mono Black Series

## PALLET FRONT VIEW (DOUBLE STACKED)



## PANEL IDENTIFICATION



## PALLET SHIPMENT DIMENSIONS

Length of pallet:	1712 mm (68 in)
Width of pallet:	1045 mm (41 in)
Height of single pallet stack:	1210 mm (47.5 in)
Height of double pallet stack:	2420 mm (95 in)
Pallet weight:	40 kg (88 lbs)
Stack weight (pallet + panels):	ca. 535 kg (1180 lbs)

## DELIVERY INFORMATION

Panels per pallet:	26
Panels per GP/high cube container (40 ft):	728 (28 pallets)
Panels per 13.6 m truck:	780 (30 pallets)
Panels per 53 ft truck:	884 (34 pallets)

## DELIVERY DOCUMENTATION

Flash data list:	On short side
Serial number list:	On short side
Product name:	On long side
Watt class:	On long side

## PACKAGING MATERIAL

Pallet:	Wood
Foam pad:	Polyurethane Polyether Polyol
Top cover:	Corrugated cardboard
Edge protectors:	Core board - Kraft
Corner pieces and spacers:	HDPE

## STORAGE AND TRANSPORTATION

Stacking for storage:	2 pallets max
Stacking for transportation:	2 pallets max

**Note:** When double stacking pallets, ensure the upper pallet sits securely on the edge protector to avoid damage to the lower pallet during transportation or handling

**Note:** Pallets delivered stacked are not bound together.

## MINIMUM FORK LENGTHS FOR TRANSPORTATION

		Single/Double stack only
Forklift	Long side	1.2 m (47 in)
	Short side	1.5 m (59 in)
Pallet jack	Long side	<b>X</b>
	Short side	1.5 m (59 in)

**Note:** Forks must be spaced a minimum of 500 mm apart  
 Handlers must ensure that vehicles used for REC pallets can handle the specified load safely.

**Note:** Specifications subject to change without notice

## PALLET SIDE VIEW (DOUBLE STACKED)



## PALLET STACKING



## PACKAGING DOCUMENTATION

**REC340TP3M**

Part: **6002125**    Pallet No: **L2313584\_AAAA**

No.	Serial	Top	Imp(A)	Prog(W)	No.	Serial Number	Imp(A)	Prog(W)
1	309120476	9.674	336.1	19	309120213	9.675	336.8	
2	309120478	9.676	336.2	19	309120432	9.673	336.1	
3	309120479	9.676	336.2	20	309117076	9.671	335.2	
4	309120480	9.676	336.2	21	309117075	9.662	336.3	
5	309120481	9.677	336.3	22	309117088	9.665	336.7	
6	309120482	9.677	336.3	23	309117079	9.662	336.3	
7	309120474	9.671	336.2	24	309117084	9.667	336.6	
8	309120475	9.629	336.2	25	309117109	9.663	336.7	
9	309120476	9.662	336.8	26	309120300	9.677	336.3	
10	309120477	9.669	336.1					
11	309120478	9.641	336.8					
12	309120479	9.677	336.3					
13	309120480	9.670	336.8					
14	309120481	9.669	336.8					
15	309120482	9.677	336.8					
16	309120483	9.630	336.8					
17	309120484	9.629	336.2					

**Attention!**

Weight: 520 kg (1150 lbs)

Improper handling will damage the content.

Quality Stamp: **QUALITY 25/11/2020 R.F.P ACCEPTED**

**Vorsicht!**

Weight: 520 kg (1150 lbs)

Unschädlicher Transport führt zur Beschädigung der Ware.

Panel Handling: **Attention! Wear clean gloves**

Installation Instructions: [Installationanleitung](#)  
 Outline of symbols: [Auslassung der Symbole](#)  
[www.recgroup.com/en/usa](http://www.recgroup.com/en/usa)

**Made in Singapore**

- Pallet No. 1 is the top module in a stack
- Pallet No. 33 is the lowest module in a stack
- Pallet documentation shows:
  - Module serial number
  - Module bar code
  - Manufacturing date
  - Electrical data ( $I_{SC}$ ,  $I_{MP}$ ,  $V_{OC}$ ,  $V_{MP}$ ,  $P_{MP}$ , Fill Factor)

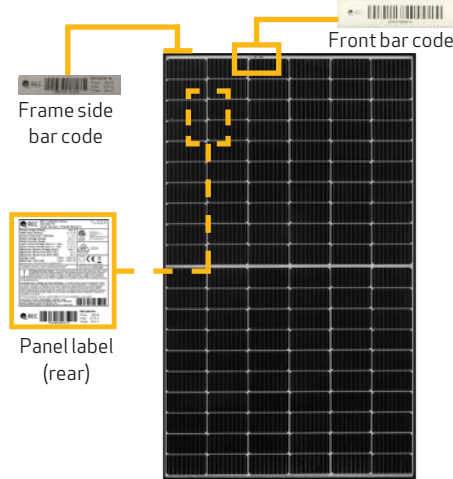
# REC TWINPEAK 4 SERIES

These packaging specifications are applicable to the following products:  
 REC TwinPeak 4 Series      REC TwinPeak 4 Black Series

## PALLET FRONT VIEW (DOUBLE STACKED)



## PANEL IDENTIFICATION



## PALLET SHIPMENT DIMENSIONS

Length of pallet:	1800 mm (71 in)
Width of pallet:	1080 mm (42.5 in)
Height of single pallet stack:	1225 mm (48 in)
Height of double pallet stack:	2450 mm (96 in)
Pallet weight:	44 kg (93 lbs)
Stack weight (pallet + panels):	ca. 705 kg (1554 lbs)

## DELIVERY INFORMATION

Panels per pallet:	33
Panels per GP/high cube container (40 ft):	858 (26 pallets)
Panels per 13.6 m truck:	924 (28 pallets)
Panels per 53 ft truck:	924 (28 pallets)

## DELIVERY DOCUMENTATION

Flash data list:	On short side
Serial number list:	On short side
Product name:	On long side
Watt class:	On long side

## PACKAGING MATERIAL

Pallet:	Wood
Foam pad:	Polyurethane Polyether Polyol
Top cover:	Corrugated cardboard
Edge protectors:	Core board - Kraft
Corner pieces and spacers:	HDPE

## STORAGE AND TRANSPORTATION

Stacking for storage:	2 pallets max
Stacking for transportation:	2 pallets max

**Note:** When double stacking pallets, ensure the upper pallet sits securely on the edge protector to avoid damage to the lower pallet during transportation or handling

**Note:** Pallets delivered stacked are not bound together.

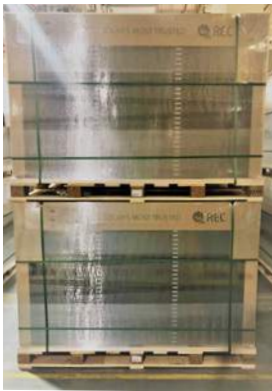
## MINIMUM FORK LENGTHS FOR TRANSPORTATION

		Single/Double stack only
Forklift	Long side	1.2 m (47 in)
	Short side	1.5 m (59 in)
Pallet jack	Long side	<b>X</b>
	Short side	1.5 m (59 in)

**Note:** Forks must be spaced a minimum of 500 mm apart  
 Handlers must ensure that vehicles used for REC pallets can handle the specified load safely.

**Note:** Specifications subject to change without notice

## PALLET SIDE VIEW (DOUBLE STACKED)



## PALLET STACKING



## PACKAGING DOCUMENTATION

**REC365TP4 Black**

Part: **6002362**      Pallet No: **L2336113\_AAAA**

Serial No.	Top	Serial No.	Bottom
1	1800	1800	1800
2	1801	1801	1801
3	1802	1802	1802
4	1803	1803	1803
5	1804	1804	1804
6	1805	1805	1805
7	1806	1806	1806
8	1807	1807	1807
9	1808	1808	1808
10	1809	1809	1809
11	1810	1810	1810
12	1811	1811	1811
13	1812	1812	1812
14	1813	1813	1813
15	1814	1814	1814
16	1815	1815	1815
17	1816	1816	1816
18	1817	1817	1817
19	1818	1818	1818
20	1819	1819	1819
21	1820	1820	1820
22	1821	1821	1821
23	1822	1822	1822
24	1823	1823	1823
25	1824	1824	1824
26	1825	1825	1825
27	1826	1826	1826
28	1827	1827	1827
29	1828	1828	1828
30	1829	1829	1829
31	1830	1830	1830
32	1831	1831	1831
33	1832	1832	1832

Weight: 705 kg (1554 lbs)  
 Proper handling will  
 preserve the content.

Caution: 705 kg (1554 lbs)  
 Use proper lifting technique  
 to avoid injury to the worker.

**Made in Singapore**

- Pallet No. 1 is the top module in a stack
- Pallet No. 33 is the lowest module in a stack
- Pallet documentation shows:
  - Module serial number
  - Module bar code
  - Manufacturing date
  - Electrical data ( $I_{SC}$ ,  $I_{MP}$ ,  $V_{OC}$ ,  $V_{MP}$ ,  $P_{MP}$ , Fill Factor)

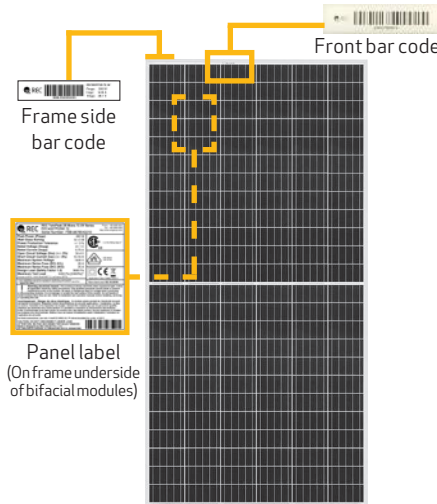
# REC TWINPEAK SERIES (72-CELL)

These packaging specifications are applicable to the following products:  
REC TwinPeak 3S Mono 72 Series

## PALLET FRONT VIEW (DOUBLE STACK)



## PANEL IDENTIFICATION



## PALLET SHIPMENT DIMENSIONS

Length of pallet:	2052 mm (81 in)
Width of pallet:	1055 mm (42 in)
Height of single pallet stack:	1220 mm (48 in)
Height of double pallet stack:	2440 mm (96 in)
Pallet weight:	53 kg (117 lbs)
Stack weight (pallet + panels):	ca. 790 kg (1750 lbs)

## DELIVERY INFORMATION

Panels per pallet:	33
Panels per GP/high cube container (40 ft):	726 (22 pallets)
Panels per 13.6 m truck:	858 (26 pallets)
Panels per 53 ft truck:	825 (25 pallets) (per US road weight restrictions)

## DELIVERY DOCUMENTATION

Flash data list:	On short side
Serial number list:	On short side
Product name:	On long side
Watt class:	On long side

## PACKAGING MATERIAL

Pallet:	Wood
Foam pad:	Polyurethane Polyether Polyol
Top cover:	Corrugated cardboard
Edge protectors:	Core board - Kraft
Corner pieces and spacers:	HDPE

**Note:** Pallet documentation envelope contains 2 x tools for simple connector release.

## STORAGE AND TRANSPORTATION

Stacking for storage:	2 pallets max
Stacking for transportation:	2 pallets max

**Note:** When double stacking pallets, ensure the upper pallet sits securely on the edge protector to avoid damage to the lower pallet during transportation or handling

**Note:** Pallets delivered stacked are not bound together.

## MINIMUM FORK LENGTHS FOR TRANSPORTATION

		Single/Double stack only
Forklift	Long side	1.2 m (47 in) Loading & unloading of container only
	Short side	1.8 m (71 in)
Pallet jack	Long side	<b>X</b>
	Short side	1.8 m (71 in)

**Note:** Forks must be spaced a minimum of 500 mm apart. Handlers must ensure that vehicles used for REC pallets can handle the specified load safely.

**Note:** Specifications subject to change without notice

## PALLET SIDE VIEW (DOUBLE STACK)



## PALLET STACKING



## PACKAGING DOCUMENTATION

**REC400TP3SM 72 XV**

Part: **6002172** Pallet No: **L4886807\_AAAA**

No.	Serial Number	Watt (W)	Part No.	No.	Serial Number	Watt (W)	Part No.
1	888917784	348.9	888917784	17	888917784	348.9	888917784
2	888917784	348.9	888917784	18	888917784	348.9	888917784
3	888917784	348.9	888917784	19	888917784	348.9	888917784
4	888917784	348.9	888917784	20	888917784	348.9	888917784
5	888917784	348.9	888917784	21	888917784	348.9	888917784
6	888917784	348.9	888917784	22	888917784	348.9	888917784
7	888917784	348.9	888917784	23	888917784	348.9	888917784
8	888917784	348.9	888917784	24	888917784	348.9	888917784
9	888917784	348.9	888917784	25	888917784	348.9	888917784
10	888917784	348.9	888917784	26	888917784	348.9	888917784
11	888917784	348.9	888917784	27	888917784	348.9	888917784
12	888917784	348.9	888917784	28	888917784	348.9	888917784
13	888917784	348.9	888917784	29	888917784	348.9	888917784
14	888917784	348.9	888917784	30	888917784	348.9	888917784
15	888917784	348.9	888917784	31	888917784	348.9	888917784
16	888917784	348.9	888917784	32	888917784	348.9	888917784
17	888917784	348.9	888917784	33	888917784	348.9	888917784

Modules: 33

Attention / Vorwarnung

Weight: 790 kg (1750 lbs) / Gewicht: 790 kg (1750 lbs)

Handle with care / Vorsicht bei der Handhabung

Quality Stamp: QUALITY 5S11/2020 8.25 ACCEPTED

Panel Handling: Attention / Wear safety glasses

Installation instructions: [www.recgroup.com/downloads](#)

Quality of assembly: [www.recgroup.com/downloads](#)

Made in Singapore

- Pallet No. 1 is the top module in a stack
- Pallet No. 33 is the lowest module in a stack
- Pallet documentation shows:
  - Module serial number
  - Module bar code
  - Manufacturing date
  - Electrical data ( $I_{SC}$ ,  $I_{MP}$ ,  $V_{OC}$ ,  $V_{MP}$ ,  $P_{MP}$ , Fill Factor)





REC SOLAR PTE. LTD.  
20 TUAS SOUTH AVENUE 14  
SINGAPORE 637312  
SINGAPORE  
Tel: +65 6495 9228  
Mail: [post@recgroup.com](mailto:post@recgroup.com)

[www.recgroup.com](http://www.recgroup.com)